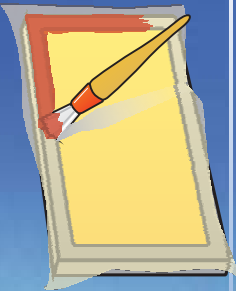


# FOTECO STENCIL CHEMICAL LINE

## ADHERE



1-COMPONENT

**2340**

2-COMPONENTS

**2320/**

**2325**

**2320HV/**

**2325**

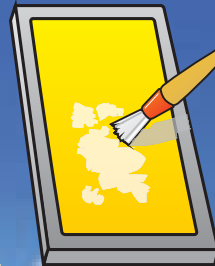
**2330/**

**2335**

**2350/**

**2355**

## DEGREASE



READY-TO-USE

**2003**

**2023**

CONCENTRATE

**2033**

**2033S**

## PREPARE



READY-TO-USE

**2002**

**2023**

**2025**

CONCENTRATE

**2022**

**BRUSH**

## HARDEN



READY-TO-USE

**2100**

**2110**

**2113**

CONCENTRATE

**2111**

LIQUID LIGHT

**2154**

## BLOCK-OUT



VISCOSITY

**2060** blue

NORMAL **2066** green

**2070** red

**2077** WR

HIGH VISCOSITY

**2010** green

**SPEED TAPE**

## SCREEN WASH



SOLVENTS

**2090**

**FOTECLEAN\***

## DECOAT



READY-TO-USE

**2004**

**2005** Paste

CONCENTRATE

**2040**

**2042**

**2044** Powder

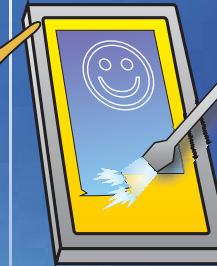
**2048**

**HINTS**

\* various screen wash solvents with denomination FOTECLEAN can be supplied in co-ordination with REMCO.

For technical details see our Technical Information under

## RECYCLE



ALL-IN-ONE

**CLEANMIX\***

**10:10:1**

CONCENTRATE

**2051**

**+**

**2048**

## HAZE REMOVAL



READY-TO-USE

**2089**

**2091**

**80020**

2-COMPONENTS

**2080/**

**2085**

A complete sales program with product description and sizes from stock is available on request.

For technical details see our Technical Information under

[www.fotec.ch](http://www.fotec.ch)

**FOTECHEM**

**FOTEC AG, P.O.Box 1123, CH-8700 KÜSNACHT, SWITZERLAND Tel +41 44 913 30 00 info@fotec.ch**