

TECNO THICK FILMS

Light green photopolymer film in thicknesses of 100 to 700 microns for the production of thick stencils by the direct/indirect method.

The **TECNO FILMS** are solvent and water resistant.

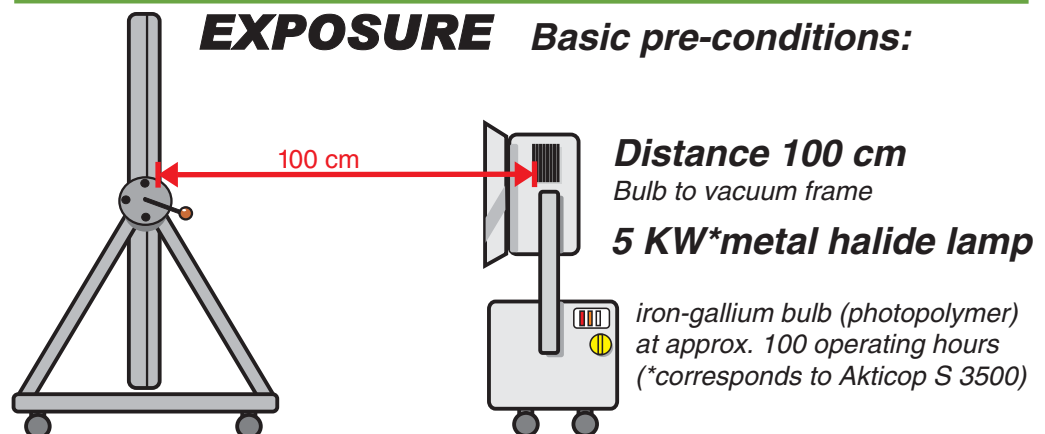
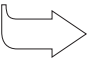
FOTECOAT 1834 SOLO

screen emulsion is needed to produce **water** resistant stencils.

FOTECOAT 1840 SOLO

screen emulsion is needed to produce **solvent** resistant stencils.

The reverse side shows the application of TECNO Films



1 minute per 100 micr. **FILM** thickness

TECNO

THICK Film transferred with
FOTECOAT 1834 (WR) SOLO or
FOTECOAT 1840 (SR) SOLO

Standard stencil removers like
FOTECHEM 2005 paste or
FOTECHEM 2048 concentrated liquid
can be used.



Available in:

Sheets: 22x31 cm and 44x62 cm, 10 sheets per package

Rolls: 66x210 cm; individual roll sizes

Film thicknesses: 100, 150, 200, 250, 300, 350, 400, 700 μ m

FOTEC AG, POB 1123, Eigenheimstrasse 22, CH-8700 Küsnacht
TEL+41 (0)44 913 30 00 FAX +41(0)44 910 45 25 Switzerland
e-mail: info@fotec.ch Internet: www.fotec.ch

Edition: 1 2/2011

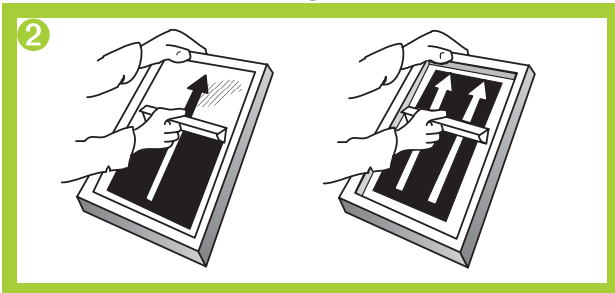
EXTRA THICK STENCILS TECNO



PREPARE THE MESH

- Degrease thoroughly and let dry.

Work under yellow or subdued light conditions.

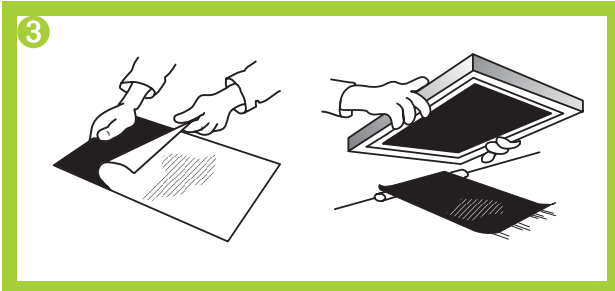


PRECOAT

- Coat 1x print side, 2x squeegee side. **WET in WET.** Do **NOT** dry.

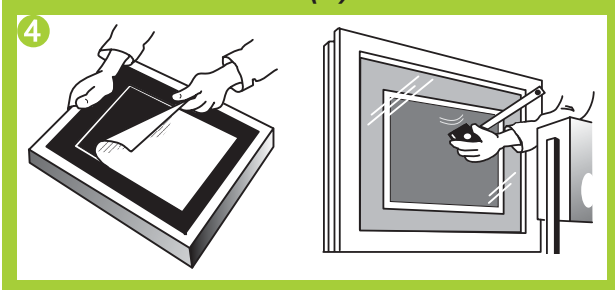
Use FOTECOAT 1834 SOLO for water based inks or 1840 SOLO for solvent based inks.

The coating should cover most of the mesh area.



ADHERE THE FILM(S)

- Remove protective plastic sheet from film.
- Place film, emulsion side upwards, on a table or better on FOTECO's FILMAFFIX.
- Bring the wet screen in contact with the film edge.
- Pull the frame slowly and without pressure towards you.
- Dry at 25-35°C, squeegee side upwards.



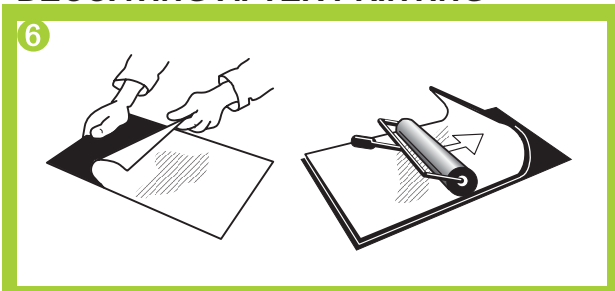
PEEL CARRIER, EXPOSE, WASH-OUT

- **IMPORTANT:** let the film cool down before peeling the carrier; dry again for a few minutes.
- Place right-reading positive in position.
- Expose.
- Wash-out at 25°C (immerse for a few minutes in luke warm water).
- Dry thoroughly.



DECOATING AFTER PRINTING

- Clean stencil from ink.
- Use decoating chemicals from squeegee side.
- TECNO Film comes off in whole pieces.
NOTE: check drain outlet.



HOW TO LAMINATE

- You can laminate 2 or more TECNO sheets face to face. No adhering liquid is necessary.
- Remove protective plastic sheet from both films.
- Place one film on the table and use a hard rubber roller to combine the sheets.
- Peel carrier sheet and continue at step No. 3 or repeat for more sheets.